

The 2011 UCI Carousel Volkswagen

Jingle Cross Rock

Technical Guide



Carousel Volkswagen



Jingle Cross Rock

Presented by

SCHEELS.

Powered by



We Make It Happen.

Midwestern Iowa Hospitality provided by The Iowa City-Coralville Convention and Visitors Bureau



CONTENTS

Sponsors (Please Thank These Great Sponsors)		Page 4
Race Organization		Page 5
Race Staff		Page 5
Jingle Cross Charitable Mission		Page 5
Officials		Page 5
Announcers		Page 5
Medical/Emergency Information		Page 6
Accommodations		Page 6
Race Venue		Page 6
Iowa City/Coralville Area Map		Page 7
Schedules and Course Maps	Friday, November 25 th	Page 8,9
	Saturday, November 26 th	Page 10,11
	Sunday, November 27 th	Page 12,13
Race Regulations		
	Race Classification / Permits	Page 14
	Course Distance	Page 14
	Race Registration	Page 14
	Race Numbers	Page 14-15
	Staging	Page 15
	Starting Procedure	Page 16
	SRAM Wheel Pits/Bike Wash	Page 16
	Lapped Riders	Page 17
	Results	Page 17
	Race Finish/Awards	Page 17
	Payout Chart	Page 18
	Anti-Doping	Page 19
	Media	Page 19
	IBRA Points	Page 19
Saturday Race Party at the Vine in Coralville		Page 19

SPONSORS



Carousel Volkswagen



Iowa City Heart Center, P.C.



Jingle Cross Organization

Executive Race Director and Promotor

John Meehan

john@jinglecrossrock.com

206 947-7793

Race Course and Venue Director

Todd Gillihan

todd.gillihan@uiowa.edu

319 356-1616

Registration and Administration Director

Mark Guthart

mguthart@g4sportsmarketing.com

319 321-6487

Staff

Registration Leaders

Jean Gilpin/ Beth Guthart Swyter

Registration Leaders

Michelle Cole/Roger Swyter

Merchandise/Swag Director

Darcy Sanford

Mt. Krumpit Captain

Ken Lefler

North Field Course Captain

Dan Schaffer

South Field Course Captain

Jeff Barnes

Results Coordinator

Mike Edwards

Volunteers Coordinator

Nate van Der Weide

Charitable Mission (PLEASE READ)

The University of Iowa Children's Hospital

The Jingle Cross Rock is a charity event. That makes the Jingle Cross the most unique UCI event unlike any other in the world. All profits from the Jingle Cross are donated to the University of Iowa Children's Hospital. This event would not be possible without donations from sponsors and rider registration fees. **Many riders have generously donated their winnings back to the Children's Hospital at our registration building and we thank you for your kindness.** For those who win cash prizes, we have additional merchandise and swag set aside which you can trade for your cash prize.

Officials

President of the Commisaire's Panel (UCI) Dot Abbot

Chief Referee (USAC) (NC) Steve Eppel

Chief Judge (NC) Heidi Mingesz

Official (NC) James Abbot

Official (RC) Jeff Mertz

Official (RC) Emma Weiss

Official (RC) Brett Griggs

Official (RC) Larry Howe

Official (RC) Maria Ruthenburg

Registrar/Secretary (RA) Mark Guthart

Announcers

Richard Fries and John Lefler

Medical/Emergency Information

Medical Director	Michael Schaeffer University of Iowa Sports Medicine
Medical Tent	Located Near Finish Line Stage (see map)
Hospital, Level 1 Trauma Center	University of Iowa Hospitals and Clinics 319 356-1616
Ambulance	Johnson County Ambulance 319 346-6013 or 911
Police	Iowa City Police 319 356-5275 or 911
Emergency	911

Accommodations/Race Hotel (see map on next page)

The Coralville Marriott is the Official Hotel of the 2010 UCI Carousel Volkswagen Jingle Cross Rock presented by Scheels. Room Rates are \$89/night + tax. Please contact the race hotel thru our "Lodging" page on our website at www.JingleCrossRock.com or you may contact them directly at The Coralville Marriott, 300 East 9th Street, Coralville, Iowa 52241, Phone: 319-688-4000. Be sure to say you are here for the "Jingle Cross Rock".

Directions From the Coralville Marriott to Race Venue

Easiest: Exit the Marriott and travel back up the main road from the Marriott to 1st Avenue. Take a right onto 1st avenue and travel 400 meters to I-80 West. Take I-80 west to exit 239 (Highway 218). Take Hwy 218 South to exit 89 (about 6 miles). The Jingle Cross Rock is ½ mile on the left (Johnson County Fairgrounds).

Alternative directions: (Traveling thru town): Exit the Marriott conference center and head back up the main road to 1st Avenue. Take a left on 1st avenue and follow this 1 mile to highway 6. Take a left on Highway 6. THIS MAIN ROAD AT THIS POINT IS HIGHWAY 6 BUT WILL EVENTUALLY CHANGE NAMES TO RIVERSIDE DRIVE AND THEN EVENTUALLY TO HIGHWAY 921. Stay on this road, YOU WILL NOT NEED TO TAKE ANY MORE TURNS UNTIL YOU REACH THE FAIRGROUNDS. (Be aware, Hwy 6 veers off to the East but do not follow Highway 6... keep going straight and stay on Riverside). After 4 miles, you will see the Iowa City Municipal Airport on your right and from there you only have 1 more mile to go. The fairgrounds will be on your right about 1 mile past the Iowa City Municipal Airport.

Venue

The race Venue is the Johnson County Fairgrounds in Iowa City. Friday night will be under the lights courtesy of Musco Lighting and LL Pelling construction. Saturday and Sunday will be during the daytime.

Race Course Maps are provided on the ensuing pages. PLEASE BE ADVISED THAT CONSTRUCTION HAS BEEN ONGOING AT THE FAIRGROUNDS FOR THE LAST 2 YEARS. We have published these maps based on the latest information provided to us. PLEASE UNDERSTAND THAT THESE COURSE MAPS ARE TENTATIVE BASED ON CONSTRUCTION INFORMATION GIVEN TO THE JINGLE CROSS ORGANIZATION AND MAY NEED TO CHANGE AT A MOMENTS NOTICE. REGARDLESS OF ANY POTENTIAL LAST MINUTE CHANGES, THE JINGLE CROSS COURSE WILL COMPLY WITH ALL UCI REGULATIONS.

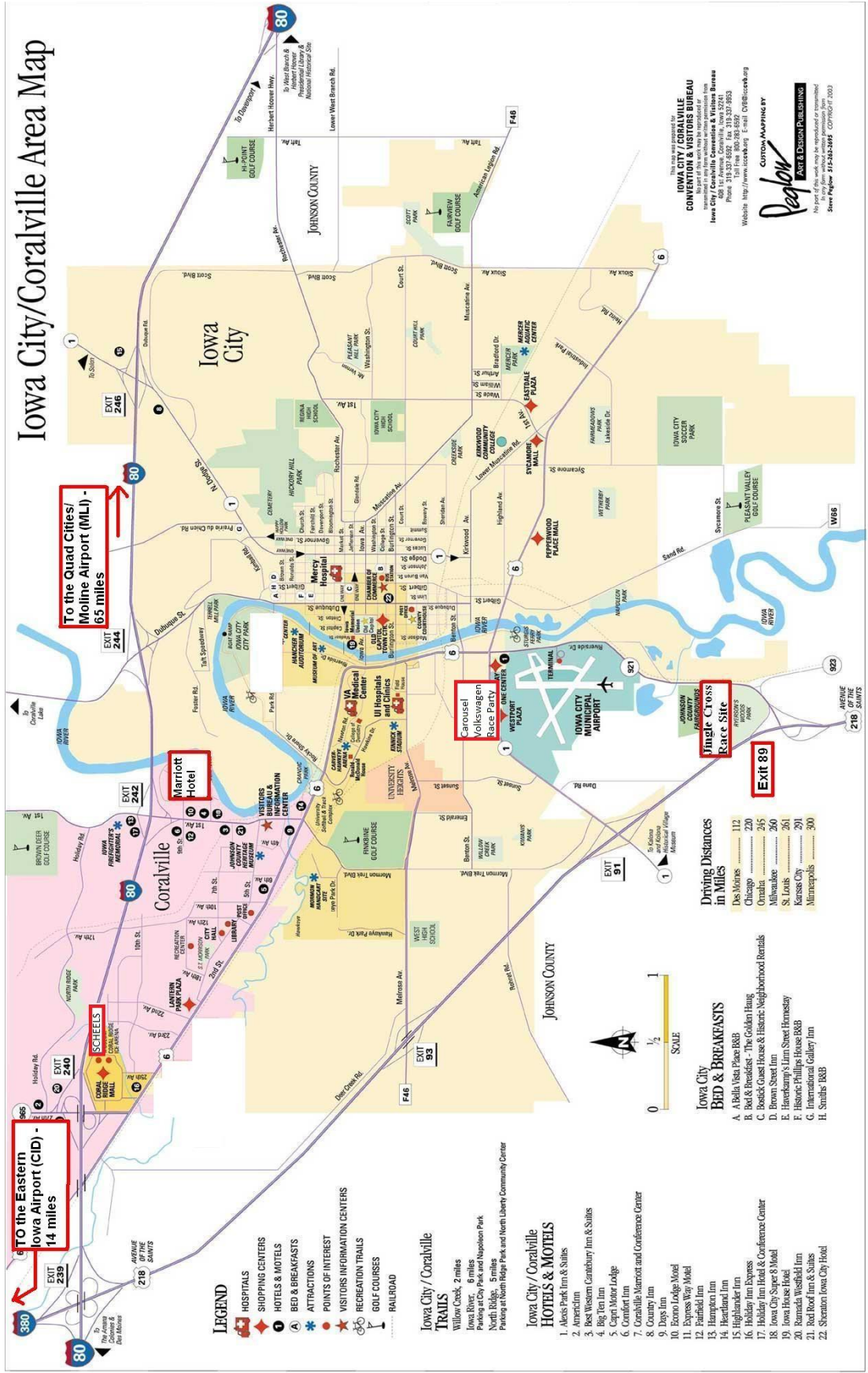
General Directions (See map on next page): The Johnson County Fairgrounds in Iowa City, Iowa is easily found off of Highway 218, about 6 miles south of I-80. From I-80, take exit 239 and proceed on Highway 218 South to exit 89. There is only direction you can go from this exit ramp. The Johnson County Fairgrounds is 1/2 mile on your left.

Venue Parking

There is ample parking at the Jingle Cross venue. Please park ONLY in the North paved parking area and the designated South Field Grass parking area. Please DO NOT park on the roads between the buildings. There is absolutely no camping or staying an RV's or any other vehicles overnight at the Johnson County Fairgrounds.

Showers Available on site in Building C. PLEASE HOSE OFF MUD AT THE SECONDARY BIKE WASH BEFORE YOU SHOWER (page 15). DO NOT USE THE SHOWERS AS YOUR HOSE DOWN AREA. This has cost us hundreds of dollars in clean up fees.

Iowa City/Coralville Area Map



To the Eastern Iowa Airport (CID) - 14 miles

To the Quad Cities/Moline Airport (MIL) - 65 miles

Marriott Hotel

Jingle Cross Race Site

Carusel Volkswagen Race Party

EXIT 89

LEGEND

- HOSPITALS
- SHOPPING CENTERS
- HOTELS & MOTELS
- BED & BREAKFASTS
- ATTRACTIONS
- POINTS OF INTEREST
- VISITORS INFORMATION CENTERS
- RECREATION TRAILS
- GOLF COURSES
- RAILROAD

Iowa City / Coralville TRAILS

- Willow Creek, 2 miles
- Iowa River, 6 miles
- Parking at City Park and Napoleon Park
- North Ridge, 5 miles
- Parking at North Ridge Park and North Liberty Community Center

Iowa City / Coralville HOTELS & MOTELS

1. Aledo Park Inn & Suites
2. Ansonium
3. Best Western Canterbury Inn & Suites
4. Big Ten Inn
5. Capt. Moore Lodge
6. Comfort Inn
7. Cornelia Summit and Conference Center
8. Country Inn
9. Days Inn
10. Days Inn Lodge Motel
11. Express Plus Motel
12. Fairfield Inn
13. Hampton Inn
14. Headland Inn
15. Highlander Inn
16. Holiday Inn Express
17. Holiday Inn Hotel & Conference Center
18. Iowa City Super 8 Motel
19. Iowa House Hotel
20. Ramada Westfield Inn
21. Red Roof Inn & Suites
22. Stratton Iowa City Hotel

Driving Distances in Miles

Des Moines	112
Chicago	270
Omaha	245
Milwaukee	260
St. Louis	261
Kansas City	291
Minneapolis	300

Iowa City BED & BREAKFASTS

- A. A Beds (Old Place B&B)
- B. Bed & Breakfast - The Golden Haug
- C. Bessie Guest House & Historic Neighborhood Rentals
- D. Brown Street Inn
- E. Hancock's Inn Street Herstory
- F. Historic Phillips House B&B
- G. International Gallery Inn
- H. Smith's B&B

This map was prepared for
IOWA CITY / CORALVILLE CONVENTION & VISITORS BUREAU
 409 1st Avenue, Coralville, Iowa 52241
 Phone: 319.337.8292 Fax: 319.337.8953
 Website: <http://www.iowacity.org> E-mail: CIVB@iowacity.org
Custom Mapping by People's Art & Design Publishing
 No part of this publication may be reproduced without written permission from the publisher.
 See Page 9: 515-363-3695 COPYRIGHT 2003



We Make It Happen®

Race Schedule

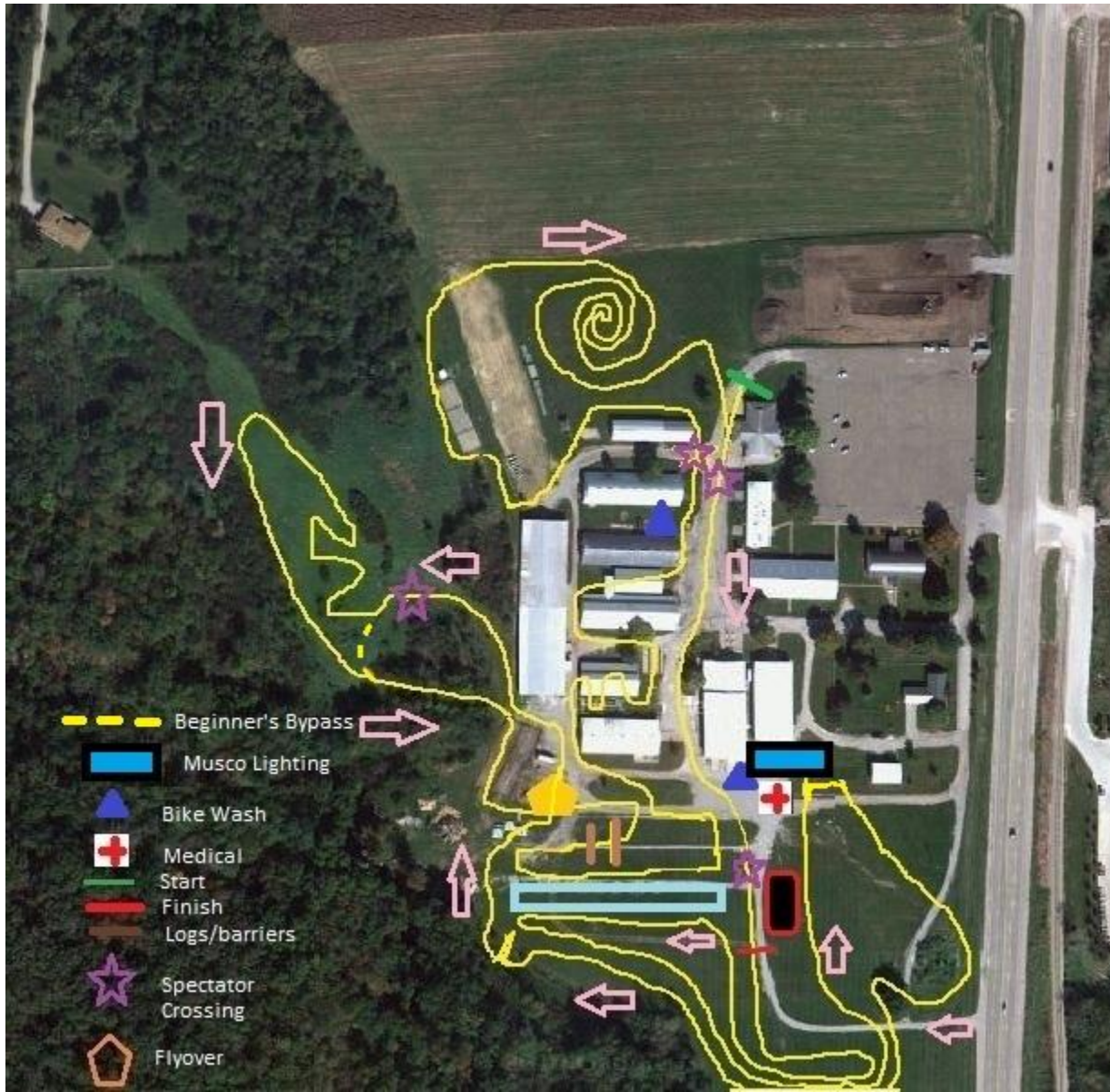
FRIDAY NIGHT, November 25th, 2011

Sponsored by MUSCO

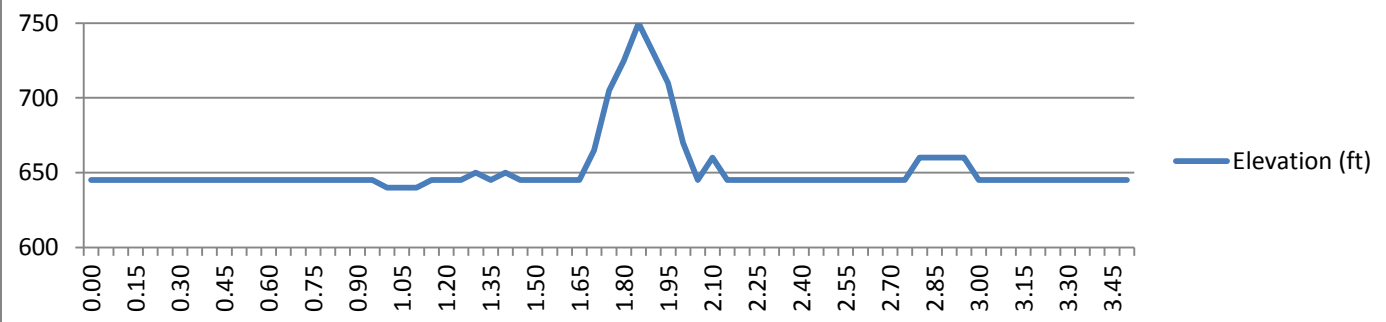
Event	Start	Time	Fee	Prizes
World of Bikes Men's Beginner Cat 4	3:30 pm	35 min	\$25	Merch
30th Century Bikes Women's Beginner Cat 4	3:30 pm	35 min	\$25	Merch
Sugar Bottom Bikes Master Men 35+	4:20 pm	40 min	\$30	\$250/5
Healthy Habits Master Men 45+	4:20 pm	40 min	\$30	\$250/5
Rasmussen's Bike Shop Men's Cat 2	5:15 pm	45 min	\$30	\$250/5
Geoff's Bike and Ski Men's Cat 3	5:15 pm	45 min	\$30	\$200/4
Women's Cat 2/3	5:15 pm	45 min	\$30	\$150/3
Carousel Volkswagen UCI (C2) Women's Elite presented by Scheels	6:30 pm	40 min	\$35	\$1353/15
Carousel Volkswagen UCI (C2) Men's Elite presented by Scheels	7:30 pm	60 min	\$40	\$2068/25

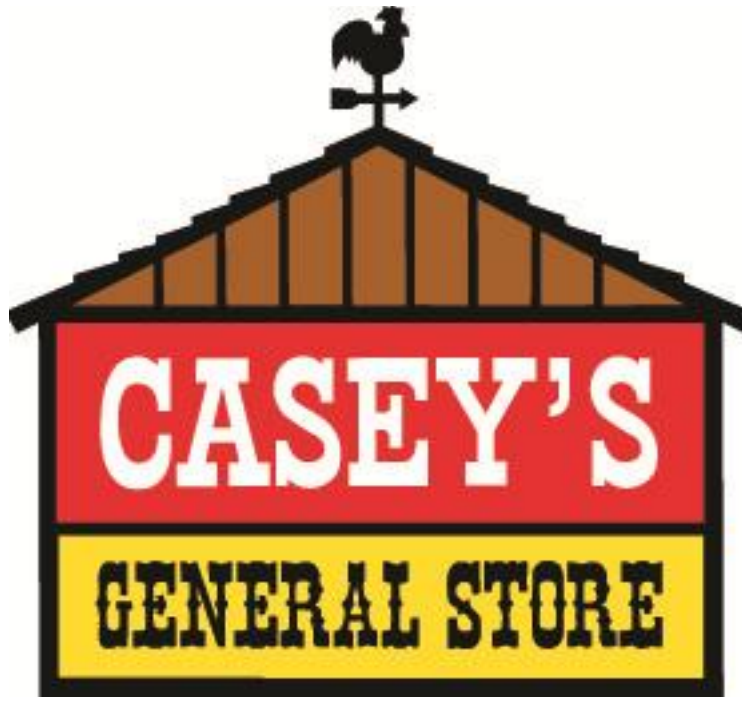


Race Course Map
Friday, November 25th 2011



Friday Elevation Profile





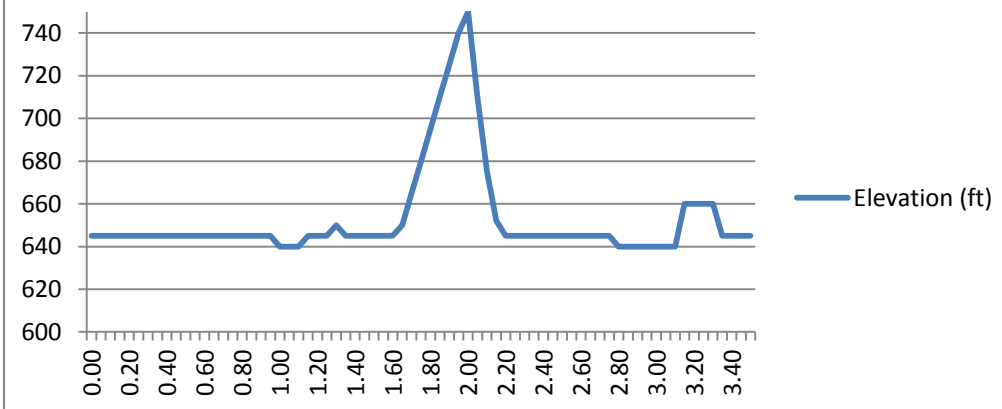
SATURDAY, November 26th, 2011
Sponsored by Casey's General Stores

Event	Start	Time	Fee	Prizes
Bikes To You Junior Boys 10-14,15-17	8:45 am	30 min	\$18	Merch/3
Bikes To You Junior Girls 10-14,15-17	8:45 am	30 min	\$18	Merch/3
World of Bikes Men's Beginner Cat 4	9:30 am	35 min	\$32	Merch/5
30th Century Bike Women's Beginner Cat 4	9:30 am	35 min	\$32	Merch/3
Women's Cat 2/3	10:20 am	40 min	\$32	\$150/3
Sugar Bottom Bikes Single Speed	10:20 am	40 min	\$32	Merch/3
Iowa City Heart Center Master Men 55+	10:20 am	40 min	\$32	Merch/3
Sugar Bottom Bikes Master Men 35+	11:15 am	45 min	\$32	\$250/5
Healthy Habits Master Men 45+	11:15 am	45 min	\$32	\$250/5
Grinch's Kid's Race – Sponsored by Build-A-Bear Workshop	12:05 pm	3 Grinch Laps	Free	Don't Ask
Rasmussen's Bike Shop Men's Cat 2	12:30 pm	45 min	\$32	\$250/5
Geoff's Bike and Ski Men's Cat 3	12:30 pm	45 min	\$32	\$200/4
Carousel Volkswagen UCI (C2) Women's Elite presented by Scheels	1:45 pm	40 min	\$40	\$1353/15
Carousel Volkswagen UCI (C2) Men's Elite presented by Scheels	2:45 pm	60 min	\$45	\$2068/25

Race Course Map
Saturday, November 26th 2011



Saturday Elevation Profile





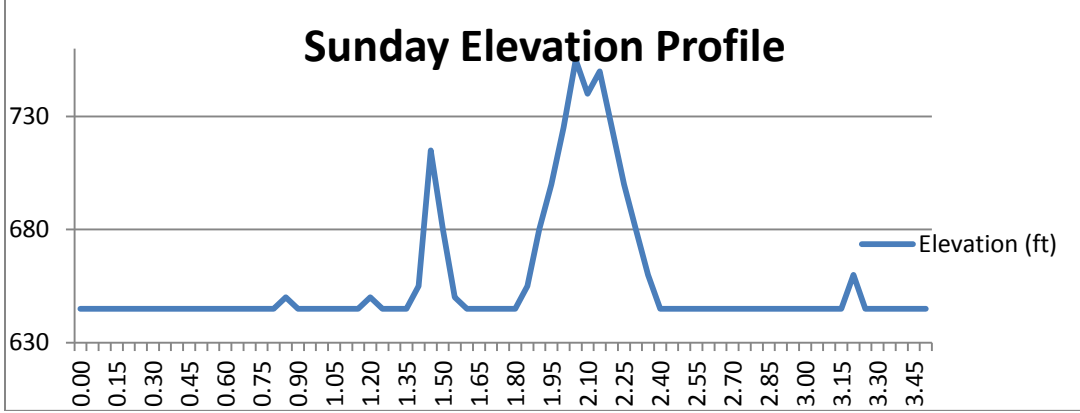
SUNDAY, November 27th, 2011

Sponsored by Intuitive Surgical
Event

Event	Start	Time	Fee	Prizes
Bikes To You Junior Boys 10-14,15-17	8:45 am	30 min	\$18	Merch/3
Bikes To You Junior Girls 10-14,15-17	8:45 am	30 min	\$18	Merch/3
30th Century Bike Women's Beginner Cat 4	9:30 am	35 min	\$32	Merch/3
World of Bikes Men's Beginner Cat 4	9:30 am	35 min	\$32	Merch/5
Women's Cat 2/3	10:20 am	40 min	\$32	\$150/3
Sugar Bottom Bikes Single Speed	10:20 am	40 min	\$32	Merch/3
Iowa City Heart Center Master Men 55+	10:20 am	40 min	\$32	Merch/3
Sugar Bottom Bikes Master Men 35+	11:15 am	45 min	\$32	\$250/5
Healthy Habits Master Men 45+	11:15 am	45 min	\$32	\$250/5
Grinchs Single Speed Speedo Spectacular A Charity fun ride	12:05 pm	15 min	\$3	Creativity is rewarded (Single Speeds and/or Speedos NOT required)
Rasmussen's Bike Shop Men's Cat 2	12:35 pm	45 min	\$32	\$250/5
Geoff's Bike and Ski Men's Cat 3	12:35 pm	45 min	\$32	\$200/4
Carousel Volkswagen UCI (C1) Women's Elite presented by Scheels	1:45 pm	40 min	\$40	\$1353/15
Carousel Volkswagen UCI (C1) Men's Elite presented by Scheels	2:45 pm	60 min	\$45	\$8723/30

Race Course Map

Sunday, November 27th 2011



Race Classification/Permit

The 2011 UCI Carousel Volkswagen Jingle Cross Rock presented by Scheels is classified as a UCI C2 level event on Friday November 25th and Saturday November 26th. The event is classified as a C1 event for Sunday, November 27th. The UCI Elite Men and UCI Elite Women races will be run under UCI regulations. The UCI scale of penalties is solely applicable. A current UCI International racing license is required to race the UCI races.

The Jingle Cross is also classified as a USAC Category A level event, held under permit number 2011-3526. Non-UCI races will be held under USA Cycling regulations.

Course Distance

The course loop distances have been measured for the current published maps as follows

Friday: 3.48 km

Saturday: 3.49 km

Sunday: 3.47 km

Race Registration

The direct link for online registration for both UCI Elite races and USAC amateur races on our Registration Page at www.JingleCrossRock.com. This will directly link you to our Bike Reg site at www.bikereg.com. Registration will be open from September 1st, 2011 through 8:00 pm CST on Wednesday evening, November 23rd, 2010. Online registration will close after this date/time. USAC Race day registration at the Johnson County Fairgrounds opens at 2:00 pm on Friday and 7:30 am on Saturday/Sunday. Registration closes 30 minutes before each USAC event. USAC Race day registration is permitted. UCI race day registration has been extended to 1 hour before race time. Rider confirmation and race number pick-up closes 1 hour before start of the UCI races. There are no refunds for any registrations for any reasons. Please do not ask. Our courses are wide open, long and plenty of room to pass. Max numbers per event combining all categories for a single start time is 150.

Race Numbers

All riders will have shoulder/upper arm numbers and back numbers. Make sure the number shoulder/upper arm number is visible from the front and the back number visible from the back. **BACK NUMBERS WILL BE ON THE LEFT SIDE.** Riders will wear the same race number for the same race category on each day. If you enter multiple categories on the same day, you must wear the correct bib number for that corresponding race. **BE SURE TO HAVE THE CORRECT BIB NUMBER FOR THAT RACE OR YOU WILL NOT BE PERMITTED TO START.** For example, if you are racing the single speed and then race the 45+ category, be sure to have your single speed number for your single speed race and your 45+ number for the 45+ race. Consult the Race Number Guide in this document for proper race numbers. Race numbers are to remain unfolded and uncrumpled. **You will use the same number in the same category for all three days so save your race number.** Unregistered riders who race in an event for which they have not registered will be disqualified for that race and all remaining races. No refunds will be granted.



Again, be sure race numbers on the upper arm/shoulder are visible from the front

Race Numbers

Category

1-99	UCI Men
100-199	UCI Women
200-299	Men Cat 2
300-399	Men Cat 3
400-499	Men Cat 4
500-599	Women Cat 2/3
600-649	Women Cat 4
650-699	Grinch's Kids Race
700-799	Men 35+
800-869	Men 45+
870-899	Men 55+
900-949	Juniors
950-975	Single Speed
976-1000	Overflow numbers (used as necessary in any category)

Staging

Staging of Rider: USAC

Riders will be staged in order of registration. If multiple categories are starting at the same scheduled start time, riders from each category will stage together, and then be sent off in waves, usually 30 seconds to 1 minute apart between categories (the exact delay between waves is ultimately at the officials discretion). Riders starting in a preceding wave out of their own category will be disqualified from the race. Riders are required to report to the staging area 15 minutes prior to the start of their race.

Staging of Riders: UCI

Standard UCI protocols will be used in the staging of riders for the UCI Elite Men/Women races. The start lists for these races will be provided in order of staging, with UCI point-holding riders lining up first (in order of points), followed by computer randomization for all non-UCI point-holding riders each day. Riders will be staged and allowed to line up individually as their names or numbers are called (per standard protocol). Riders are required to report to the staging area 15 minutes prior to the start of their race.

Starting Procedure

Race Starts: USAC

The USAC races may have special honorary guest starters, who will “assist” the Chief Referee in starting each race. These starters are children from the University of Iowa Children’s Hospital - the primary beneficiary of the event. Although we are all racers and are very competitive and probably super focused just before the start, please remember the primary purpose of this event and be respectful and cheer for our starters when they are introduced prior to your start. After that brief introduction, you can get your game face on for the start!. This process is subject to change to accommodate the needs of the officials as necessary. Riders are expected to be alert to the instructions provided by the Chief Referee.

Race Starts: UCI

Standard UCI protocol will be followed, with the Chief Referee responsible for starting the race. The start will be as follows: A notice will be given at one minute to start, 30 seconds to start, and 15 seconds to start. The start signal (gunshot or whistle) may be given *at any point after this*.



All pits will be UCI-configuration and use of the pits will be enforced per USAC or UCI regulations.

UCI Pit Pass (for UCI races)

Each rider is allowed one licensed mechanic in the wheel pit. UCI requires that all mechanics working in the pits in the Elite UCI races must be UCI certified mechanics. All mechanics are required to wear their passes and have them visible to race officials at all times. No pass, no access to the pit. No spectators, family members or photographers are allowed in the pit. For safety reasons, all mechanics in the pit must be there for support reasons only, not for photography.

Please Note: The USAC (non-UCI) race mechanics do not have to be licensed as a mechanic through UCI.

Feeding

Per the UCI regulation, feeding might be permitted in the wheel pit only. This is allowed only if the temperature is above 68 degrees F at the start of the race and only if announced by the President of the Commissaires. Feeding outside of the pit will result in disqualification. Under any circumstances, feeding is not permitted in the first 2 or the last 2 laps of racing.

Quality Care Pit Bike Wash

A Wheel Pit Bike Wash will be available to the mechanics near the pit area sponsored by Quality Care Lawn Services. The Quality Care Bike Wash within the SRAM wheel pit is EXCLUSIVE for riders who are racing. Riders/mechanics who are not actively racing absolutely may NOT use the Quality Care wheel pit bike wash. Please use the additional Quality Care bike wash locations (see map).

Secondary Bike Wash

In order to avoid use of the pit bike wash by riders who are not actively racing, additional bike wash locations are noted on the map(see maps). Please be sure to use these locations for general cleaning of your bike AND YOURSELF after your event. Please do not use the showers in Building C as the main way to clean the mud off of your clothes. Hose off outside before using the showers.

Hotel Bike Wash

As another option, the Coralville Marriott will set up some hoses in a suitable location near the hotel grounds. Please do not take wet or dirty bikes into the Marriott.

Lapped Riders

For UCI Elite events, lapped riders will be pulled according to the UCI standards. These standards require lapped riders to be pulled in accordance with a time percentage (80%) slower than the lead rider. This is to ensure the safety of the lead riders and also ensure that lapped riders do not inadvertently affect the race outcome by hindering either the lead rider or those in pursuit. Riders that are pulled MUST vacate the course when and where instructed to do so. The location for pulling lapped riders is often the wheel pit but this location is subject to the President of the Commissaire's final determination.

For USAC events, officials will make every effort to NOT pull lapped riders. Slower riders are required to give way to riders overtaking them. However, if safety or other issues arise, lapped riders may be pulled at the discretion of the Chief Referee. Pulling of lapped riders will be done by the officiating staff only.

Results

Results will be posted at registration. Following the end of the 3 day event, results will also be posted within 24 hours on the Jingle Cross Rock website at www.jinglecrossrock.com, and will be sent to USACycling and the UCI. A general posting will also be sent following the entire 3 day event on the Iowa Bicycle Racing Association website at www.bikeiowa.org. Should questions arise regarding results or scoring, please contact the Chief Judge listed at the beginning of this guide. Press releases will be sent to local, national, and international media.

Race Finish / Awards Protocol

The top 3 riders from each and every race are required to report to the podium immediately after crossing the line for a photo opportunity and podium ceremony. An additional U23 podium will be recognized for the UCI Elite Men races on each day for riders who qualify for the U23 designation. Riders accept that this podium presentation is based on unofficial results, and a repeat of the podium presentation may be requested should it be determined that the official results are different from the unofficial podium ceremony. Riders shall remain in the podium area briefly after the ceremony for interviews. Riders should then report to doping control as required. **REGARDLESS OF YOUR PLACE, PLEASE CHECK WITH DOPING CONTROL FOLLOWING YOUR RACE!**

Payment Procedure

Prize money for individual races will be paid on site following each event after the standard 15 minute time period allowed for protests. No awards or payouts will be awarded until the results are official and the protest period has elapsed. Please pick up your prize money and/or merchandise awards at registration. Merchandise prizes WILL NOT be mailed. Riders claiming awards must provide a valid form of identification (driver's license, passport, or racing license). Proper Tax forms will be required for UCI races. Foreign riders must complete the IRS Form 1042 S before picking up prizes.

UCI/USAC Prize Money and Points

MINIMUM PRIZE MONEY - PER EVENT:										
US Dollars								USAC	USAC	USAC
	UCI Men C1 Awards	UCI Men C1 Points	UCI Men C2 Awards	UCI Men C2 Points	UCI Women Awards	UCI – C1 Women Points	UCI – C2 Women Points	Men Cat 2, 35+, 45+	Men Cat 3	Women 2/3
1st	\$ 2178	80	\$ 457	40	\$ 247	80	40	\$100	\$80	\$75
2nd	\$ 1090	60	\$ 234	30	\$ 173	60	30	\$60	\$60	\$50
3rd	\$ 784	40	\$ 154	20	\$ 133	40	20	\$40	\$40	\$25
4th	\$ 610	30	\$ 123	15	\$ 107	30	15	\$30	\$20	
5th	\$ 523	25	\$ 112	10	\$ 93	25	10	\$20		
6th	\$ 436	20	\$ 107	8	\$ 80	20	8			
7th	\$ 392	17	\$ 99	6	\$ 80	17	6			
8th	\$ 349	15	\$ 91	4	\$ 80	15	4			
9th	\$ 306	12	\$ 88	2	\$ 80	12	2			
10th	\$ 261	10	\$ 84	1	\$ 80	10	1			
11th	\$ 218	8	\$ 78		\$ 40	8				
12th	\$ 175	6	\$ 63		\$ 40	6				
13th	\$ 153	4	\$ 59		\$ 40	4				
14th	\$ 131	2	\$ 50		\$ 40	2				
15th	\$ 110	1	\$ 34		\$ 40	1				
16th	\$ 110		\$ 29							
17th	\$ 88		\$ 29							
18th	\$ 88		\$ 29							
19th	\$ 88		\$ 29							
20th	\$ 88		\$ 29							
21st	\$ 65		\$ 18							
22nd	\$ 65		\$ 18							
23rd	\$ 65		\$ 18							
24th	\$ 65		\$ 18							
25th	\$ 65		\$ 18							
26th	\$ 44									
27th	\$ 44									
28th	\$ 44									
29th	\$ 44									
30th	\$ 44									
Total	\$ 8,723		\$ 2,068		\$ 1353			\$ 250	\$ 200	\$ 150

The rider's contribution to the Cycling Anti-Doping Foundation (CADF) of 2% is included in the Prize Money. It will be deducted from the prize money paid to the riders.

Anti-Doping / Medical

The organizers and staff of the 2011 UCI Carousel Volkswagen Jingle Cross Rock presented by Scheels are strong advocates for the missions of the USADA and WADA. All Jingle Cross Riders regardless of category may be subject to UCI/USADA Anti Doping Examination Regulations and all competitors and team personnel must abide by these regulations. Any riders with a non-negative test result (following any adjudication process) will forfeit any prizes won at the Jingle Cross Rock.

The location and list of riders required to report for doping control will be posted at the announcer's stage prior to the finish of the race. Anti doping requires riders to report within 30 minutes of their finish or notification. It is the responsibility of the rider and/or his/her team personnel to insure they report to Anti Doping within the required time. All riders in the UCI elite events are strongly reminded to immediately check doping control following their finish to see if they have been randomly selected for testing.

Media

The Media center is located in the back of Building C past the registration tables. Ample table tops and chairs are provided as well as wireless internet services.

Iowa Bicycle Racing Association (IBRA) Points Schedule

The Jingle Cross Rock is an event that will count towards the IBRA year point total for the State of Iowa. This is only for riders with USAC licenses listing the State of Iowa as their home state. IBRA will award points to the top 25 places in each race according to the following distribution:

1st	50 pts	11th	20 pts	21st	5 pts
2nd	45 pts	12th	18 pts	22nd	4 pts
3rd	40 pts	13th	16 pts	23rd	3 pts
4th	37 pts	14th	14 pts	24th	2 pts
5th	34 pts	15th	12 pts	25th	1 pt
6th	31 pts	16 th	10 pts		
7th	28 pts	17 th	9 pts		
8th	26 pts	18 th	8 pts		
9th	24 pts	19th	7 pts		
10th	22 pts	20th	6 pts		

Jingle Cross Rock Race Party: Saturday 26th, 7:00 pm 'til- whenever

The Vine Tavern
39 2nd Street (Coralville Strip)
Coralville, Iowa

Directions to Race Party from the Venue: exit Left out of the Venue. Travel about 4 miles to the Vine on your Right.

Directions to Race Party from the Marriott: Exit the Marriott and travel back up the main road from the Marriott to 1st Avenue. Take a left onto 1st avenue, go 1 mile. Take a left on Highway 6, go 0.3 miles to the Vine on your Left.

Volunteers: Please be respectful of our all volunteer staff, particularly the BIC crossing guards. Crossing Guards are there for the safety of the riders and the spectators. You MUST obey their instructions.

Questions: Contact John Meehan at 206 947-7793 or john@jinglecrossrock.com